

You're a Mean One, Mr. Grinch

Theodor "Dr. Seuss" Geisel & Albert Hague (1966) – [You're A Mean One, Mr. Grinch](#) by Thurl Ravenscroft

Intro Am Dm / Am Dm / Am Dm E

Am Dm G Am B7 E
You're a mean one, Mr. Grinch. You really are a heel.

Am Dm
You're as cuddly as a cactus

G C F E
You're as charming as an eel - Mister Gri - i - nch

Tacet Am Dm
You're a bad banana with a - greasy black peel

Instrumental Am Dm / Am Dm E

Am Dm G
You're a Monster, Mr. Grinch.

Am B7 E Am Dm
Your heart's an empty hole. Your brain is full of spiders

G C F E
You've got garlic in your soul - Mister Gri - i - nch

Tacet
I wouldn't touch you with a
E Am Dm
Thirty-nine and a half foot pole

Instrumental Am Dm / Am Dm E

Am Dm G
You're a vile one, Mr. Grinch

Am B7 E
You've got termites in your smile

Am Dm
You have all the tender sweetness
G C F E
Of a seasick crocodile - Mister Gri - i - nch

Tacet
Given the choice between the two of you -
E Am Dm
I'd take the - seasick crocodile

Instrumental Am Dm / Am Dm E

Am Dm G
You're a foul one, Mr. Grinch.

Am B7 E
You're a nasty - wasty skunk.

Am Dm
Your heart is full of unwashed socks
G C F E

Your soul is full of gunk - Mister Gri - i - nch

Tacet
The three words that best describe you are as follows:
Dm E Am Dm
And I quote: Stink, Stank, Stunk!

Instrumental Am Dm / Am Dm E

Am Dm G
You're a rotter, Mr. Grinch

Am B7 E
You're the king of sinful sots

Am Dm
Your heart's a dead tomato splotted

G C F E
With moldy purple spots - Mister Gri - i - nch

Tacet
*Your soul is an appalling dump-heap overflowing with
the most disgraceful assortment of deplorable rubbish
imaginable mangled up in*

E Am Dm
Tangled up knots

Instrumental Am Dm / Am Dm E

Am Dm G
You nauseate me, Mr. Grinch

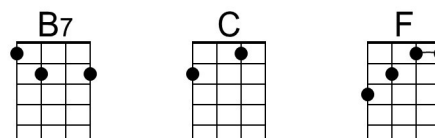
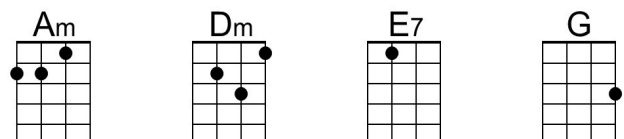
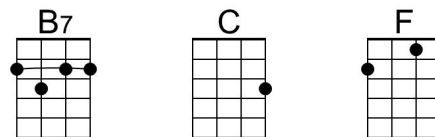
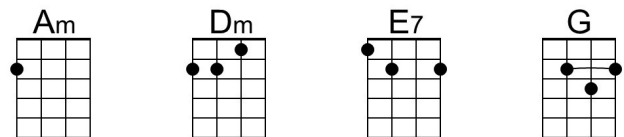
Am B7 E
With a nauseous super "naus"

Am Dm
You're a crooked jerky jockey

G C F E
And you drive a crooked horse - Mister Gri - i - nch

Tacet
You're a three decker sauerkraut and toadstool sandwich
E Am Dm
With arsenic sauce

Outro Am Dm / Am Dm / Am Dm A





You're a Mean One, Mr. Grinch

Theodor "Dr. Seuss" Geisel & Albert Hague, 1966 – [You're A Mean One, Mr. Grinch](#) by Thurl Ravenscroft

Intro Dm Gm / Dm Gm / Dm Gm A

Dm Gm C Dm E7 A
 You're a mean one, Mr. Grinch. You really are a heel
 Dm Gm
 You're as cuddly as a cactus
 C F Bb A
 You're as charming as an eel - Mister Gri - i - nch

Tacet Dm Gm
You're a bad banana with a - greasy black peel

Instrumental Dm Gm / Dm Gm A

Dm Gm C
 You're a Monster, Mr. Grinch
 Dm E7 A
 Your heart's an empty hole
 Dm Gm
 Your brain is full of spiders
 C F Bb A
 You've got garlic in your soul - Mister Gri - i - nch

Tacet
I wouldn't touch you with a
 A Dm Gm
 Thirty-nine and a half foot pole

Instrumental Dm Gm / Dm Gm A

Dm Gm C
 You're a vile one, Mr. Grinch
 Dm E7 A
 You've got termites in your smile
 Dm Gm
 You have all the tender sweetness
 C F Bb A
 Of a seasick crocodile - Mister Gri - i - nch

Tacet
Given the choice between the two of you -
 A Dm Gm
 I'd take the - seasick crocodile

Instrumental Dm Gm / Dm Gm A

Dm Gm C
 You're a foul one, Mr. Grinch
 Dm E7 A
 You're a nasty - wasty skunk
 Dm Gm
 Your heart is full of unwashed socks
 C F Bb A
 Your soul is full of gunk - Mister Gri - i - nch

Tacet
The three words that best describe you are as follows:
 Gm A Dm Gm
 And I quote: Stink, Stank, Stunk!

Instrumental Dm Gm / Dm Gm A

Dm Gm C

You're a rotter, Mr. Grinch
 Dm E7 A
 You're the king of sinful sots

Dm Gm
 Your heart's a dead tomato splotted
 C F Bb A
 With moldy purple spots - Mister Gri - i - nch

Tacet (Spoken)
*Your soul is an appalling dump-heap overflowing
 with the most disgraceful assortment of deplorable
 rubbish imaginable mangled up in*

A Dm Gm
 Tangled up knots.

Instrumental Dm Gm / Dm Gm A

Dm Gm C
 You nauseate me, Mr. Grinch
 Dm E7 A
 With a nauseous super "naus"

Dm Gm
 You're a crooked jerky jockey
 C F Bb A
 And you drive a crooked horse - Mister Gri - i - nch

Tacet
*You're a three decker sauerkraut and toadstool
 sandwich*

A Dm Gm
 With arsenic sauce

Outro Dm Gm / Dm Gm / Dm Gm D

