



A Holly Jolly Christmas – Version 2

Johnny Marks (1962) – [A Holly Jolly Christmas](#) by Burl Ives

Intro (Chords of last line) G7 C D7 G7 C G7

C Cmaj7 C6 C Cmaj7 G7
Have a holly, jolly Christmas, it's the best time of the year,

I don't know if there'll be snow, but have a cup of cheer.

C Cmaj7 C6 C Cmaj7 G7
Have a holly, jolly Christmas, and when you walk down the street,

Say hello to friends you know and everyone you meet.

F Em F C
Hey, ho, the mistletoe, hung where you can see,
Dm Am D7 Am D7 G G7
Somebody's waiting there, kiss her once for me.

C Cmaj7 C6 C Cmaj7 G7
Have a holly, jolly Christmas and in case you didn't hear,
C D7 G7 C
Oh, by golly, have a holly, jolly Christmas this year.

Repeat From Top

C 	Cmaj7 	C6 	F 	Em
Dm 	Am 	D7 	G 	G7

Baritone	C 	Cmaj7 	C6 	F 	Em
	Dm 	Am 	D7 	G 	G7

A Holly Jolly Christmas – Version 2

Johnny Marks (1962) – [A Holly Jolly Christmas](#) by Burl Ives

Intro (Chords from last line) D7 G A7 D7 G D7

G Gmaj7 G6 G Gmaj7 D7
 Have a holly, jolly Christmas, it's the best time of the year,

G
 I don't know if there'll be snow, but have a cup of cheer.

G Gmaj7 G6 G Gmaj7 D7
 Have a holly, jolly Christmas, and when you walk down the street,

G G7
 Say hello to friends you know and everyone you meet.

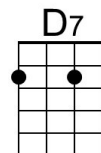
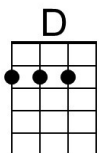
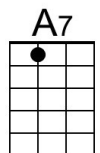
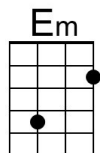
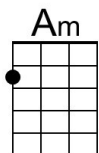
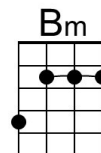
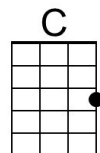
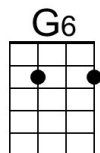
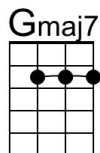
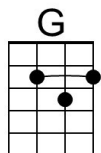
C Bm C G
 Hey, ho, the mistletoe, hung where you can see,

Am Em A7 Em A7 D D7
 Somebody's waiting there, kiss her once for me.

G Gmaj7 G6 G Gmaj7 D7
 Have a holly, jolly Christmas and in case you didn't hear,

G A7 D7 G
 Oh, by golly, have a holly, jolly Christmas this year.

Repeat From Top



Baritone

