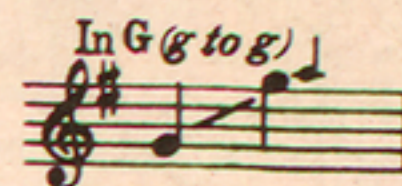
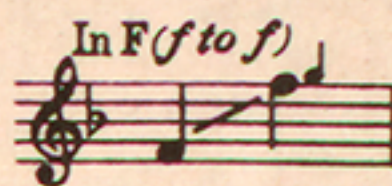
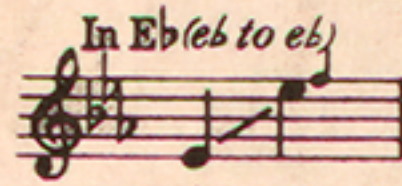
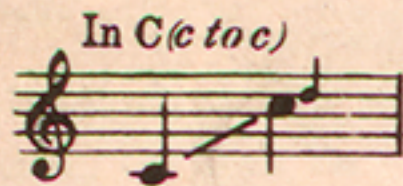


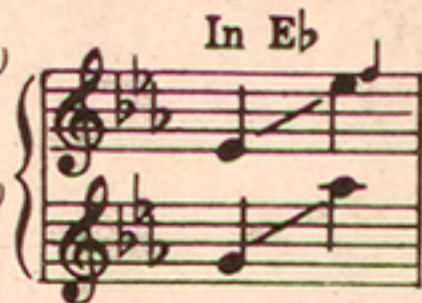
TOO-RA-LOO-RA-LOO-RAL



THAT'S AN IRISH LULLABY



Contralto (eb to eb)
or Baritone (lead)
Soprano (g to ab)
or Tenor



DUETS

Soprano (g to g)
or Tenor (lead)
Contralto (b to e)
or Baritone



J. R. SHANNON

PUBLISHED IN THE FOLLOWING ARRANGEMENTS

Vocal Solo, C-Eb-F-G.....	each .50	3 Part Mixed (SAB).....	.15
Vocal Duet, Eb-G.....	each .60	4 Part Mixed (SATB).....	.15
Two Part (SA or TB).....	.15	Accordion Solo (Bass Clef).....	.50
3 Part Treble (SSA).....	.15	Vocal Orchestration, F-C.....	each .75
4 Part Treble (SSAA).....	.16	Dance Orchestration (Fox Trot).....	.75
4 Part Male (TTBB).....	.15	Band.....	1.00

OPERATIC



WHEN PERFORMING THIS COMPOSITION KINDLY GIVE ALL PROGRAM CREDITS TO

M. WITMARK & SONS

NEW YORK

PRINTED IN U.S.A.

Too-ra-loo-ra-loo-ral THAT'S AN IRISH LULLABY

Words and Music
By J. R. SHANNON

Moderately

mf

The piano introduction consists of two staves of music in 2/4 time, marked 'Moderately' and 'mf'. The melody is in the right hand, and the accompaniment is in the left hand. The key signature has two flats (B-flat and E-flat).

With expression

O - ver in Kil - lar - ney, — Man - y years a - go, — Me
Oft, in dreams, I wan - der — To that cot a - gain, — I

mp in sustained style

The first system includes a vocal line with lyrics and a piano accompaniment. The piano part is marked 'mp in sustained style'.

Mith - er sang a song to me In tones so sweet and low, Just a
feel her arms a hug - gin' me As when she held me then. And I

The second system includes a vocal line with lyrics and a piano accompaniment.

Copyright MCMXIII by M. Witmark & Sons
Copyright Renewed

M.W. & SONS 13094 - 3

International Copyright Secured.

Made in U. S. A.

ALL RIGHTS RESERVED INCLUDING PUBLIC PERFORMANCE FOR PROFIT

The making of any unauthorized adaptation, arrangement or copy of this publication, or any part thereof, is an infringement of copyright and subjects the infringer to severe penalties under the Copyright Act.

sim - ple lit - tle dit - ty, In her good ould I - rish way, And I'd
hear her voice a - hum - min' To me as in days of yore, When she

give the world if she could sing That song to me this day. —
used to rock me fast a - sleep Out - side the cab - in door. —

retard

REFRAIN *Smoothly with much expression
in time*

"Too - ra - loo - ra - loo - ral, — Too - ra - loo - ra - li,

mp in time

SONGS OF IRELAND §§ Price \$1.00
A COLLECTION OF TYPICAL IRISH FAVORITES

Too - ra - loo - ra - loo - ral, — Hush now, don't you cry! —

Too - ra - loo - ra - loo - ral, — Too - ra - loo - ra -

1. *retard*
li, Too - ra - loo - ra - loo - ral, That's an I - rish lul - la -

2. *Optional ending* *retard*
by." loo - ral, That's an I - rish lul - la - by." *retard*